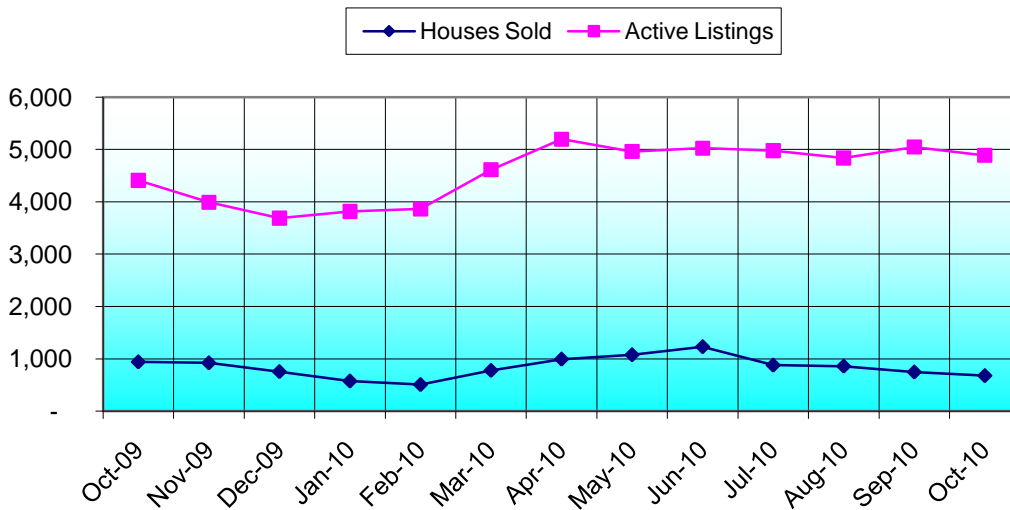


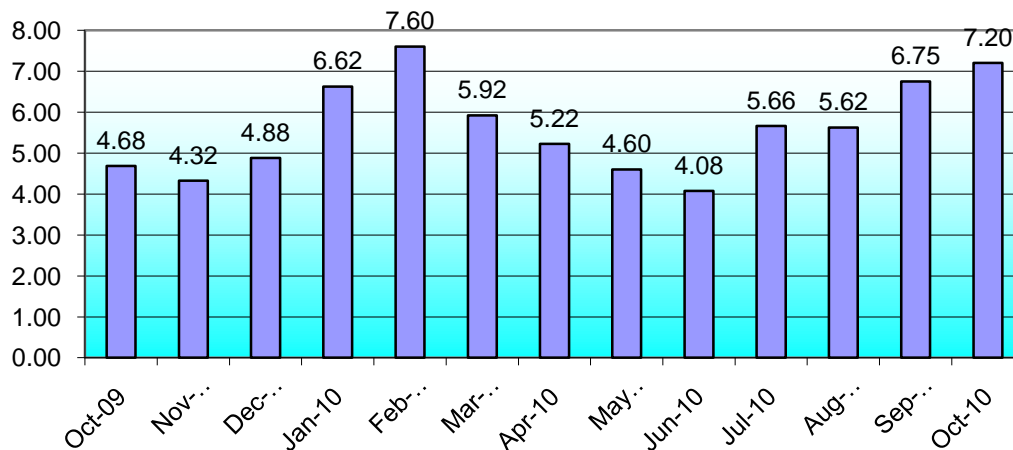
Montgomery County 2009 - 2010

Month	Houses Sold	Active Listings	Inv. Months	Days on MKT	Absorption	Pending
Oct-09	942	4,410	4.68	80	21.36%	1,251
Nov-09	923	3,990	4.32	67	23.13%	908
Dec-09	756	3,689	4.88	72	20.49%	706
Jan-10	576	3,814	6.62	75	15.10%	992
Feb-10	508	3,862	7.60	79	13.15%	801
Mar-10	779	4,613	5.92	70	16.89%	1,517
Apr-10	995	5,194	5.22	63	19.16%	1,807
May-10	1,078	4,961	4.60	51	21.73%	1,072
Jun-10	1,232	5,023	4.08	54	24.53%	1,096
Jul-10	879	4,976	5.66	57	17.66%	986
Aug-10	860	4,837	5.62	67	17.78%	1,010
Sep-10	748	5,047	6.75	72	14.82%	892
Oct-10	679	4,888	7.20	66	13.89%	991

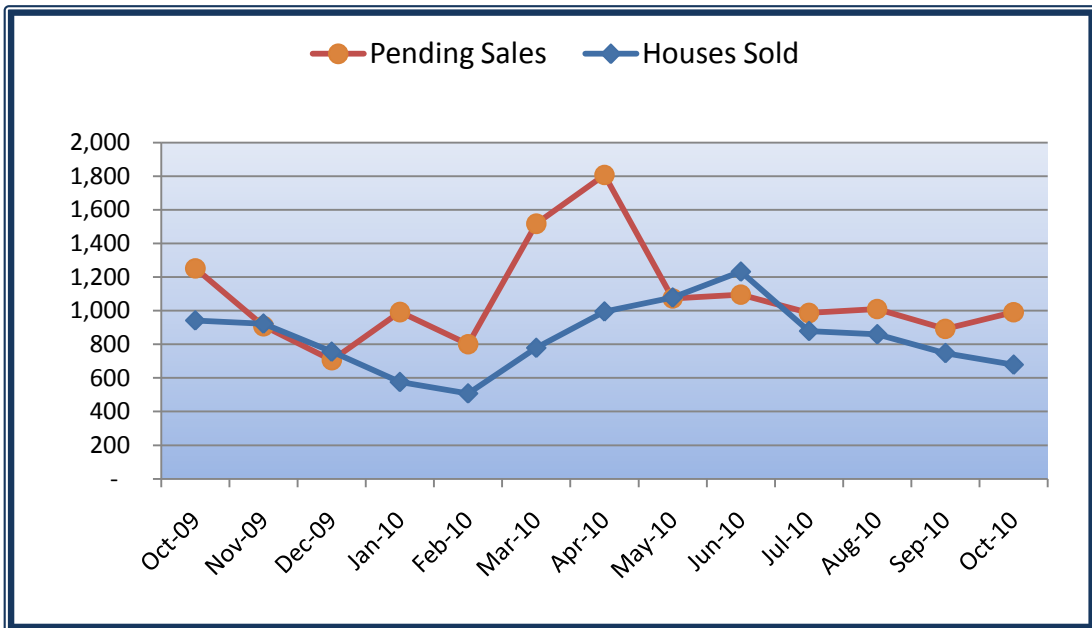
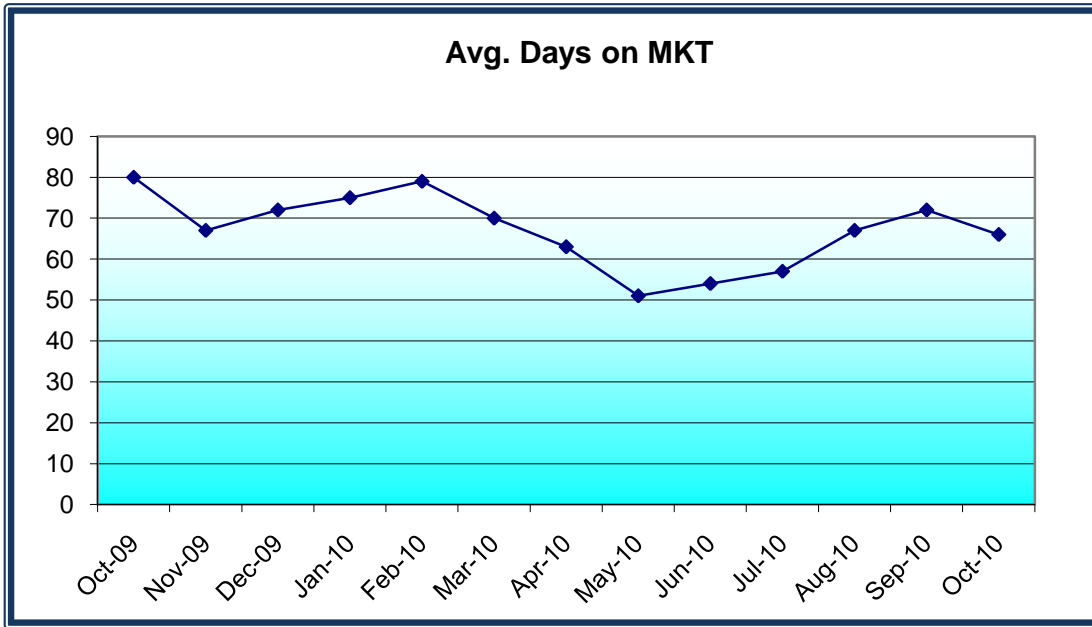
Sold vs. Active Listing



Inventory Months



Montgomery County 2009 - 2010



Time on Market

	Units Sold						
	Apr-10	May-10	Jun-10	Jul-10	Aug-10	Sep-10	Oct-10
1-30 days	578	691	726	437	386	301	286
31-60 days	127	158	232	199	183	151	144
61-90 days	75	56	86	106	109	104	82
91-120 days	51	49	43	56	74	71	59
Over 120 days	164	124	145	81	105	121	108
	995	1,078	1,232	879	857	748	679